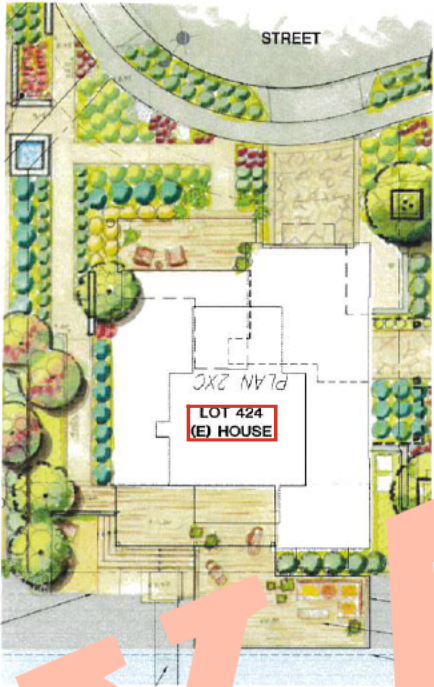


This document serves as an example only and is not to be used in place of consulting an engineer for plans customized to your lot and updated code requirements.

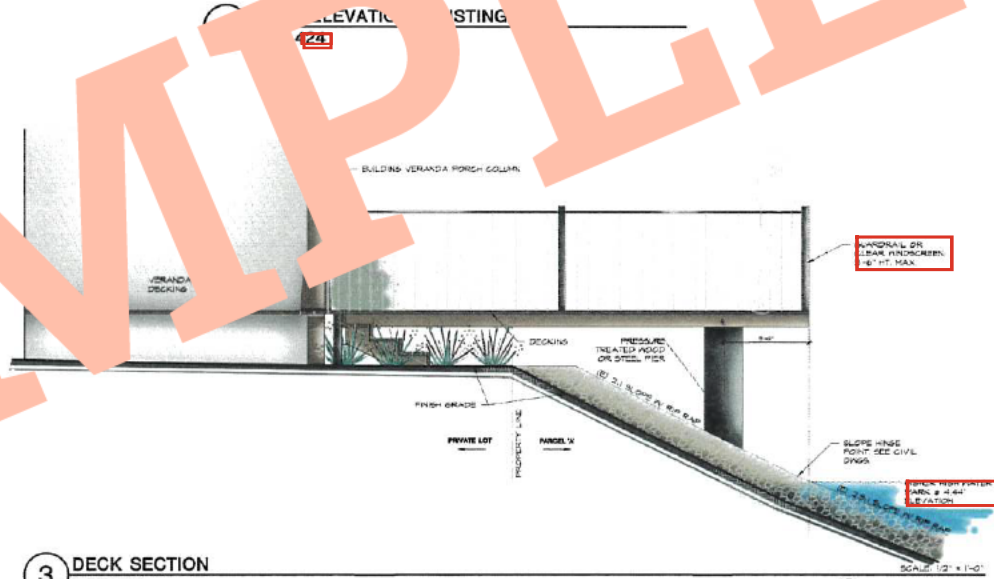
CONTRA COSTA COUNTY
 CONSERVATION AND DEVELOPMENT
 COMMUNITY DEVELOPMENT DIVISION
 HAS ONLY APPROVED THE FOLLOWING:
**MASTER PLAN UPDATE EXTENDED DOCK
 CDDP20-3003 DESIGN EXAMPLE**

ANY DEVIATIONS, MODIFICATIONS, OR ADDITIONS TO
 THIS PLAN MUST BE REVIEWED AND APPROVED BY
 CONTRA COSTA COUNTY COMMUNITY DEVELOPMENT
 BEFORE MODIFICATION.

PLANNING APPROVED BY:
 Department of Conservation and Development



- 2022 CALIFORNIA RESIDENTIAL CODE
1. Exterior walls & projections to be one-hour fire rated with restricted openings if closer than 5'-4" to property line, CRC table R302.1(1)
 2. Fire separation @ garage/porch & dwelling, CRC R302.5 & R302.6
 3. 4% natural ventilation, 8% natural light, of floor area, or artificial light and ventilation, CRC R302.3
 4. Bathroom exhaust fans in all bathrooms, CRC R302.3.1
 5. Safety glazing @ doors, CRC R308.4
 6. Emergency escape and rescue windows, CRC R310.2
 7. Smoke alarms @ sleeping rooms, hallways and @ each story, CRC R314. Carbon monoxide detectors per CRC R316
 8. Water strapping @ water heaters, CRC R312
 9. Shutoff valves required @ gas meter and/or appliances, County Ordinance
 10. Gas combustion @ water heater & furnace, CPC 106.4 & 11.4
 11. ... opening, CEC 150.0
 12. ... receptacle outlet, switch and ...
 13. ...
 14. ...
 15. ...
 16. ...
 17. ...
 18. ...



3 DECK SECTION LOT 424

EXAMPLE

RESIDENTIAL DECKS
 DMB DEVELOPMENT

EXAMPLE DESIGN CONCEPT
 COUNTY FILE #CDDP20-03003 DEVELOPMENT PLAN
 Delta Coves, Bethel Island, California

CONTRA COSTA COUNTY
 COMMUNITY DEVELOPMENT DIVISION
 REVIEWED
 DATE: 07/26/20
 JOB# 1403001

ENVIRONMENTAL FORESIGHT, INC.

0 15 30 60 FT.

L-2
 2 of 2

